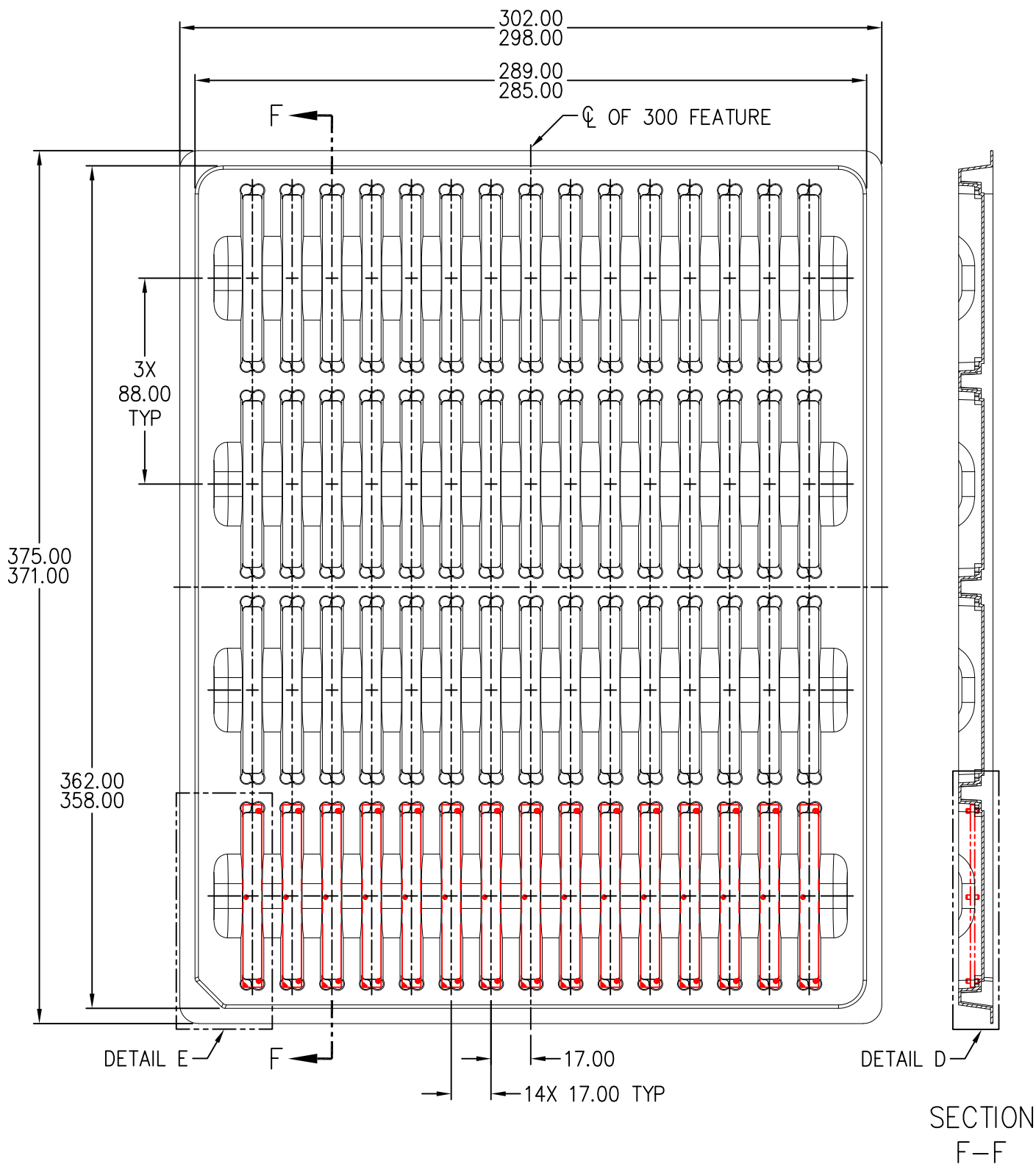


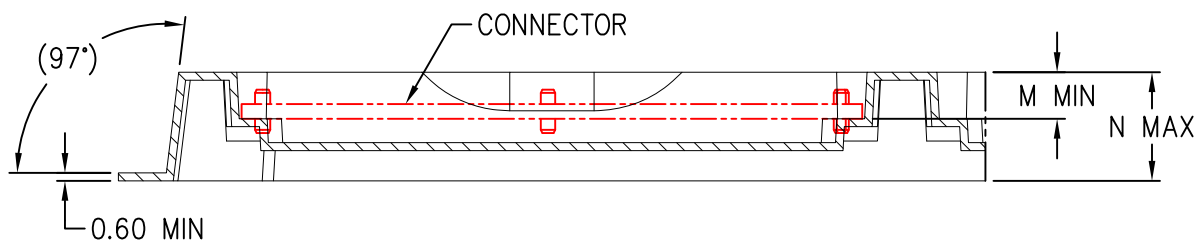
VARIATION Axxx

JEDEC SOLID STATE  
PRODUCT OUTLINE  
Copyright © 2023 JEDEC

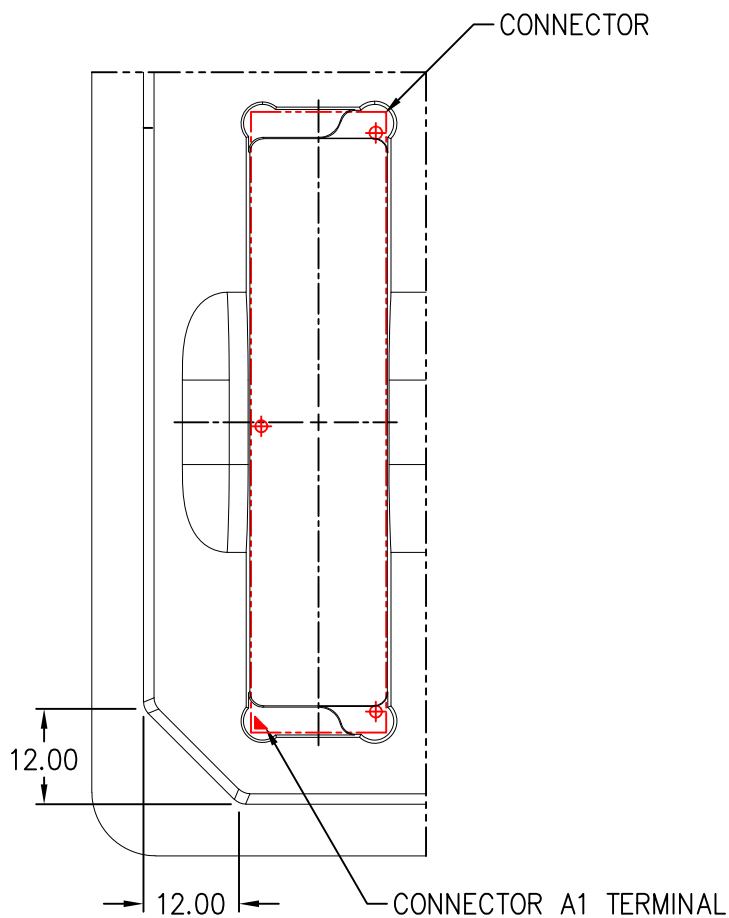
THIS *REGISTERED OUTLINE* HAS BEEN PREPARED BY THE JEDEC JC-11 COMMITTEE  
AND REFLECTS A PRODUCT WITH ANTICIPATED USAGE IN THE ELECTRONICS INDUSTRY;  
CHANGES ARE LIKELY TO OCCUR.

TITLE	PACKAGE DESIGNATOR	NUMBER	ISSUE	DATE	SHEET
SHIPPING AND HANDLING TRAY FOR CAMM2 CONNECTOR	N/A	CO-040	B	APR 2024	1 OF 6

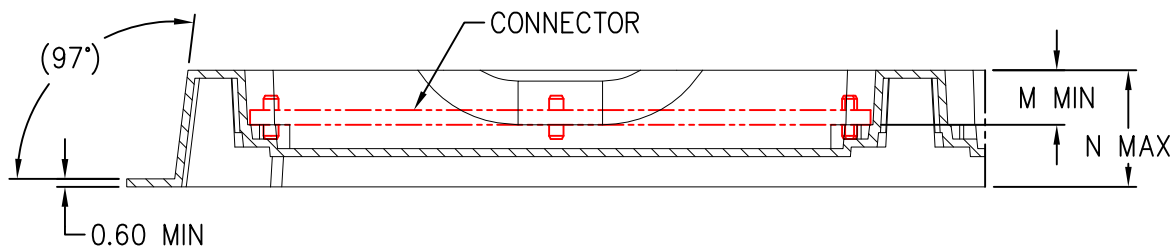




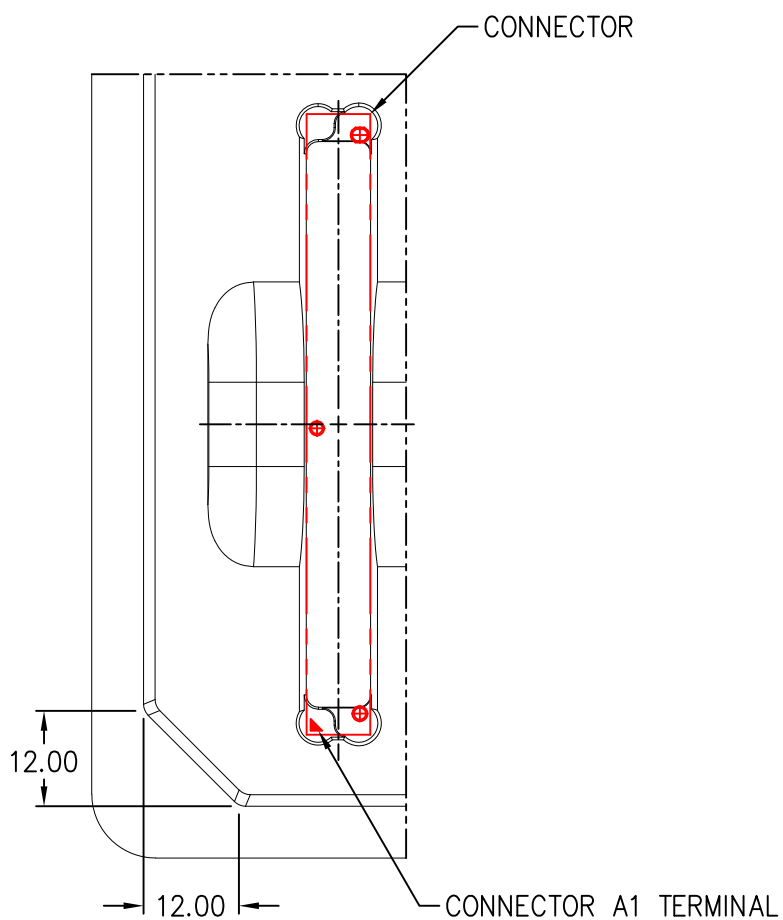
DETAIL A  
(ROTATE 90 DEGREE CW)



DETAIL B



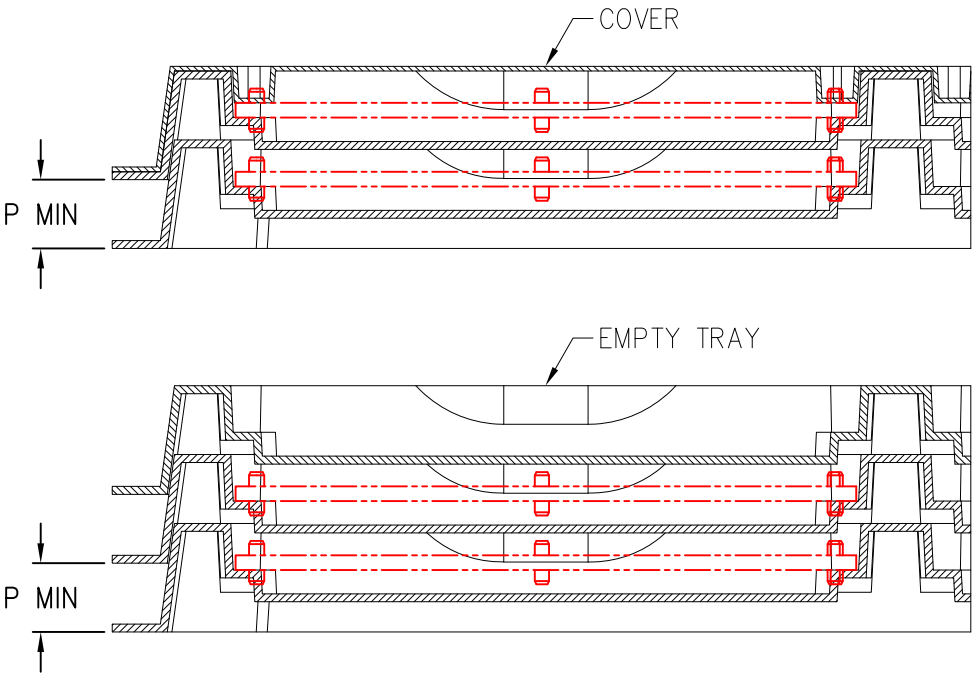
DETAIL D  
(ROTATE 90 DEGREE CW)



DETAIL E

NOTES:

- 1. DIMENSIONING AND TOLERANCING CONFORM TO ASME Y14.5–2009.
- 2. TOLERANCES ON ALL DIMENSIONS  $\pm 0.50$  UNLESS OTHERWISE SPECIFIED.
- 3. ALL DIMENSIONS ARE MM.
- 4. THE TRAY IS DESIGNED SPECIFICALLY FOR THE CAMM2 CONNECTOR.
- 5. ALL CONNECTORS ARE PLACED WITH THE SAME ORIENTATION.
- 6. REFER TO JEDEC SO–032 FOR DETAIL INFORMATION OF THE CAMM2 CONNECTOR.
- 7. THE TRAYS MAY BE STACKED.  
A COVER IS NEEDED FOR THE TOP TRAY OR KEEP THE TOP TRAY EMPTY AS A COVER.



- 8. THE CONNECTORS ARE PLACED IN THE TRAY WITHOUT OTHER PACKAGING MATERIALS, SUCH AS RELEASE FILM, FOAM, AND PACKING BOX.

TABLE 1

TRAY HEIGHT VARIATIONS					
TRAY VARIATION	AAxx	ABxx	ACxx	BCxx	BDxx
TRAY HEIGHT VARIATION	xAxx	xBxx	xCxx	xCxx	xDxx
SO-032 CONNECTOR HEIGHT	1.00	1.85	2.85	2.85	7.50
SYMBOL					
M MIN	5.00	5.85	6.85	6.85	11.50
N MAX	13.95	14.78	15.78	15.78	20.43
P MIN	8.93	9.78	10.78	10.78	15.43
NOTES					
REF	5-1041				
ISSUE	B				

STP (3D) FILE RECORD  
3D FILE NAMES MAY EXCEED LENGTH REQUIREMENTS FOR SOME SOFTWARE TOOLS.

STP FILE NAME	DATE	ITEM NUMBER
CO-040A_SHIPPING AND HANDLING TRAY FOR 1.00 MM CAMM2 CONNECTOR	AUG 2023	5-1033
CO-040B-Axxx_SHIPPING AND HANDLING TRAY FOR 1.00 MM CAMM2 CONNECTOR	APR 2024	5-1041
CO-040B-Bxxx_SHIPPING AND HANDLING TRAY FOR 1.00 MM CAMM2 CONNECTOR	APR 2024	5-1041

## TASK GROUP CONTRIBUTORS

ALIBABA(CHINA) CO. LTD  
AMPHENOL CORPORATION  
ARGOSY RESEARCH INC.  
CHANGXIN MEMORY TECHNOLOGIES INC (CXMT)  
DELL INC.  
FOXCONN INTERCONNECT TECHNOLOGY  
HEWLETT PACKARD ENTERPRISE  
HP INC.  
INTEL CORPORATION  
LENOVO  
LOTES CO., LTD  
LUXSHARE-ICT, INC.  
MOLEX LLC  
SAMSUNG SEMICONDUCTOR  
SHENZHEN DEREN ELECTRONIC CO. LTD.  
SMART MODULAR TECHNOLOGIES INC.  
TE CONNECTIVITY  
WLCO SHENZHEN CO., LTD.



# CHANGE RECORD

IF THE CHANGE INVOLVES ANY WORDS ADDED OR DELETED (EXCLUDING DELETION OF ACCIDENTALLY REPEATED WORDS), THE CHANGE IS TO BE INCLUDED BELOW. PUNCTUATION CHANGES MAY OR MAY NOT BE INCLUDED.

INITIAL ISSUE: A	DATE: AUGUST 2023	ITEM NUMBER: 5-1033
------------------	-------------------	---------------------

CHANGE RECORD HISTORY:
------------------------

ISSUE: B	DATE: APRIL 2024	ITEM NUMBER: 5-1041
----------	------------------	---------------------

LOCATION:	CHANGED FROM:	CHANGED TO:
ALL SHEETS	SHIPPING AND HANDLING TRAY FOR 1.00 MM CAMM2 CONNECTOR	SHIPPING AND HANDLING TRAY FOR CAMM2 CONNECTOR
SHEET 1		ADDED VARIATION Axxx
SHEET 2		NEW SHEET, VARIATION B
SHEET 3	WAS 5.90 & 11.00	TO M & N RESPECTIVELY
SHEET 4		NEW SHEET, VARIATION B DETAILS
SHEET 5	NOTE 2: $\pm 0.15$	NOTE 2: $\pm 0.50$
	NOTE 4: ...FOR 1.00MM HEIGHT CAMM2...	NOTE 4: ...FOR THE CAMM2...
	NOTE 6: ...OF THE CONNECTOR.	NOTE 6: ...OF THE CAMM2 CONNECTOR.
	NOTE 7: WAS 6.40 MIN	CHANGED TO P MIN ADDED EMPTY TRAY VIEW
SHEET 6		NEW SHEET, ADDED TABLE 1

JEDEC SOLID STATE PRODUCT OUTLINE Copyright © 2023 JEDEC	TITLE SHIPPING AND HANDLING TRAY FOR CAMM2 CONNECTOR	NUMBER CO-040	ISSUE B	DATE APR 2024	SHEET iii
--	---	------------------	------------	------------------	--------------